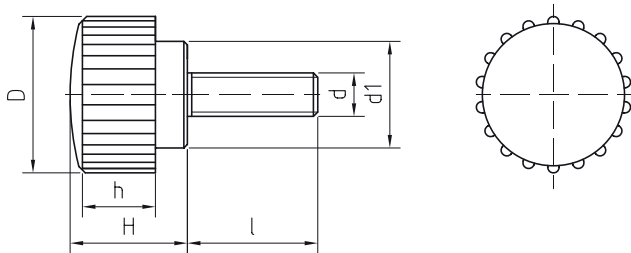


VOLANTINO ZIGRINATO CON PERNO FERRO

THUMB KNOB, KNURLED WITH THREADED STEEL STUD



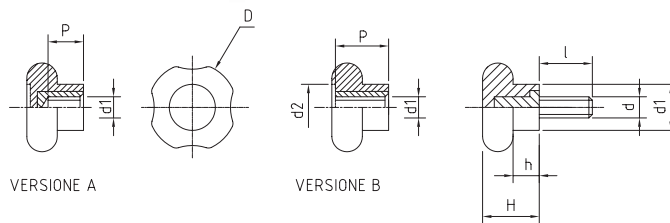
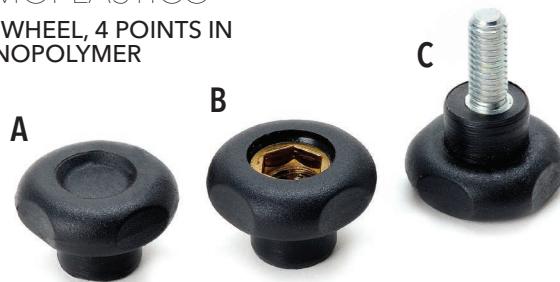
- » **Duroplasto** di colore nero, resistente a solventi, oli, grassi ed altri agenti chimici.
- » **Perno** in AVP zincato filettato con estremità terminale smussata.

- » Phenoplast, black colour, solvents-oils-greases and other chemical agents-proof.
- » Zinc-plated steel stud, threaded, chamfered end.

Cod. Code	D	d	d1	H	h	l	Gr.
07020000	15	03MA	11	11	8	10	3
07020050	15	03MA	11	11	8	15	3
07020100	15	04MA	11	11	8	10	3
07020150	15	04MA	11	11	8	15	4
07020200	15	04MA	11	11	8	30	4
07020250	15	05MA	11	11	8	10	5
07020300	15	05MA	11	11	8	12	5
07020350	15	05MA	11	11	8	15	5
07020400	15	05MA	11	11	8	40	9
07020450	18	04MA	13	14	10	10	5
07020500	18	04MA	13	14	10	15	6
07020550	18	04MA	13	14	10	20	6
07020600	18	05MA	13	14	10	10	6
07020700	18	05MA	13	14	10	15	7
07020750	18	05MA	13	14	10	20	8
07020800	18	05MA	13	14	10	25	10
07020850	18	06MA	13	14	10	12	8
07020900	18	06MA	13	14	10	15	9
07020950	18	06MA	13	14	10	20	10
07021000	18	06MA	13	14	10	25	10
07021050	18	06MA	13	14	10	30	11
07021200	18	06MA	13	14	10	50	15
07021300	22	04MA	15	16	10	10	7
07021350	22	04MA	15	16	10	20	7
07021400	22	05MA	15	16	10	20	8
07021450	22	06MA	15	16	10	15	11
07021500	22	06MA	15	16	10	30	13
07021600	22	06MA	15	16	10	50	14
07021650	22	08MA	15	16	10	15	15
07021700	22	08MA	15	16	10	20	16
07021750	22	08MA	15	16	10	30	20
07021900	22	08MA	15	16	10	50	22

VOLANTINO 4 PUNTE IN TERMOPLASTICO

HANDWHEEL, 4 POINTS IN TECHNOPLASTER



VERSIONE A

VERSIONE B

VERSIONE C

- » **Tecnopolimero** rinforzato con fibra di vetro, colore standard nero, resistente a solventi, oli e grassi.

- » VERSIONE A: boccola in ottone con foro cieco filettato
- » VERSIONE B: boccola in ottone con foro passante filettato
- » VERSIONE C: perno in acciaio zincato filettato
- » Disponibile a richiesta con inserto in OTTONE e INOX.

- » Technopolymer, fiberglass-reinforced, black colour, solvents-oils-greaseproof.
- » VERSION A: Brass insert, threaded blind hole.
- » VERSION B: Brass insert, threaded thru-hole.
- » VERSION C: Zinc-plated steel stud.
- » BRASS and STAINLESS STEEL insert available on request.

VERSIONE A - VERSION A

Cod. Code	D	d	d1	H	h	Gr.
12001050	25	M04	13	16	8	7
12001100	25	M05	13	16	8	7
12001150	25	M06	13	16	8	8
12001200	25	M08	13	16	8	9

VERSIONE B - VERSION B

Cod. Code	D	d	d1	d2	H	h	Gr.
12011050	25	M04	13	12	16	8	7
12011100	25	M05	13	12	16	8	7
12011150	25	M06	13	12	16	8	8
12011200	25	M08	13	12	16	8	9

VERSIONE C - VERSION C

Cod. Code	D	d	l	d1	H	h	Gr.
12023400	25	M04	15	13	16	8	7
12023450	25	M04	20	13	16	8	7
12023500	25	M04	30	13	16	8	8
12023550	25	M05	15	13	16	8	9
12023600	25	M05	20	13	16	8	9
12023650	25	M05	30	13	16	8	10
12024000	25	M06	15	13	16	8	13
12024050	25	M06	20	13	16	8	13
12024100	25	M06	30	13	16	8	15
12024500	25	M08	15	13	16	8	15
12024550	25	M08	30	13	16	8	15