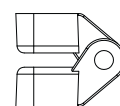
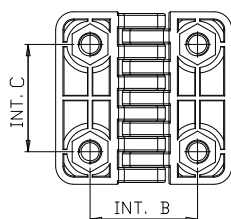
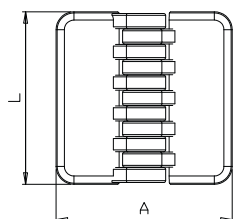
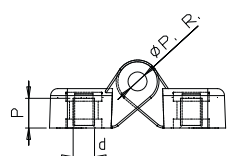
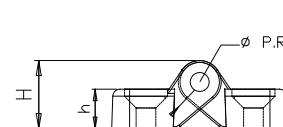
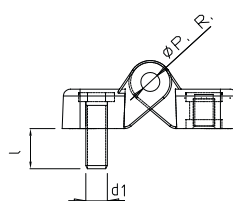
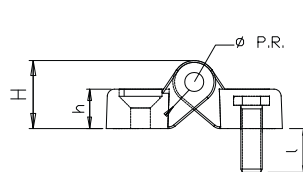
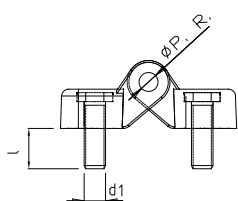
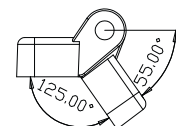


- CERNIERA CON PERNO IN FERRO, BOCCOLA IN OTTONE FILETTATA E MISTA

- HINGE WITH ZINC-PLATED STEEL BOLT, THREADED, BRASS INSERT, THREADED BLIND HOLE AND MIXED



ROTAZIONE
COMPLETA 180°



CERNIERA VERSIONE CON PERNO DI ROTAZIONE IN ACCIAIO ZINCATO

Code	Descrizione	L	A	Int B	Int C	H	h	h1	D Bocc. Ottone Cieca	P	d1 Perno	l	Ø P.R.	Gr.
35010100	50 M5	48	49	30	30	19	11	13	M5	8,5	M5		5	44
35010150	50 M6	48	49	30	30	19	11	13	M6	8,5	M6		5	45
35080000	50 M5x15	48	49	30	30	19	11	13				15	5	48
35080050	50 M6X20	48	49	30	30	19	11	13				20	5	50

CERNIERA VERSIONE CON PERNO DI ROTAZIONE IN ACCIAIO INOX

35060100	50 M5	48	49	30	30	19	11	13	M5	8,5	M5		5	45
35060150	50 M6	48	49	30	30	19	11	13	M6	5,5	M6		5	46
35090000	50 M5x15	48	49	30	30	19	11	13				15	5	49
35090050	50 M6X20	48	49	30	30	19	11	13				20	5	51