



### ● POMOLO A SFERA CON PERNO FERRO

**Duroplasto** di colore nero, resistente a solventi, oli, grassi ed altri agenti chimici.

Superficie brillante con canalino equatoriale.

**Perno** in AVP zincato filettato con estremit terminale smussata.

### ● BALL KNOB, WITH THREADED STEEL BOLT

Phenoplast, black colour, solvents-oils-greases and other chemical agents-proof.

Glossy finish, equatorial groove.

Zinc-plated steel bolt, threaded, chamfered end.



### ● POMOLO A SFERA CON PERNO FERRO GIREVOLE

**Duroplasto** di colore nero, resistente a solventi, oli, grassi ed altri agenti chimici.

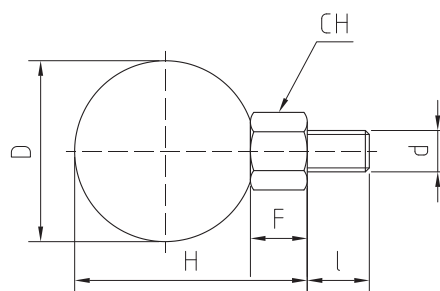
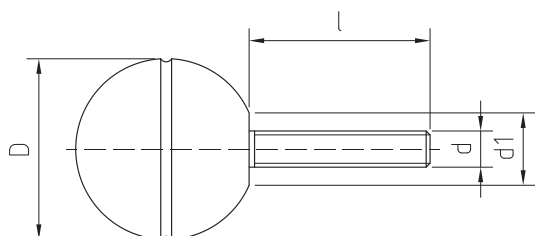
Superficie brillante.

**Perno** girevole in AVP zincato filettato con estremit terminale smussata.

### ● BALL KNOB, REVOLVING STEEL BOLT

Phenoplast, black colour, solvents-oils-greases and other chemical agents-proof. Glossy finish.

Revolving zinc-plated steel bolt, threaded, chamfered end.



#### POMOLO A SFERA CON PERNO FERRO

Cod.Code	Descriz.	D	d	l	d1	Gr.
29030000	D. 20 M04x20	20	04MA	20	8	9
29030050	D. 26 M06x20	26	06MA	20	12	18
29030100	D. 30 M06x20	30	06MA	20	16	28
29030150	D. 35 M08x20	35	08MA	20	16	39
29030200	D. 40 M08x20	40	08MA	20	16	56
29030250	D. 40 M10x20	40	10MA	20	16	50
29030300	D. 45 M12x30	45	12MA	30	22	100
29030350	D. 50 M12x30	50	12MA	30	22	124

#### POMOLO A SFERA CON PERNO FERRO GIREVOLE

Cod.Code	Descriz.	D	H	F	CH	d	l	Gr.
29040000	D. 35 M08x12	35	45	10	14	08MA	12	70
29040050	D. 35 M10x15	35	45	10	14	10MA	15	72
29040100	D. 40 M08x12	40	50	10	14	08MA	12	85
29040150	D. 40 M10x15	40	50	10	14	10MA	15	88
29040200	D. 45 M08x12	45	55	10	14	08MA	12	103
29040250	D. 45 M10x15	45	55	10	14	10MA	15	105
29040300	D. 50 M08x12	50	60	10	14	08MA	12	127
29040350	D. 50 M10x15	50	60	10	14	10MA	15	130