

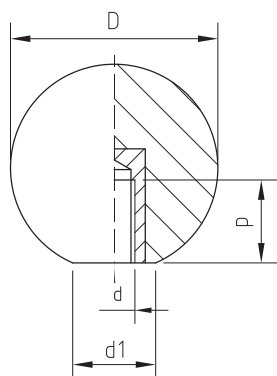


**POMOLO A SFERA
CON BOCCOLA OTTONE FILETTATA**

Duroplasto di colore nero, finitura lucida, resistente a solventi, oli, grassi ed altri agenti chimici.
Boccola in ottone con foro cieco filettato.

BALL KNOB WITH THREADED BRASS INSERT

Phenoplast, black colour, glossy finish, solvents-oils-greases and other chemical agents-proof. Brass insert, threaded blind hole.



POMOLO A SFERA CON BOCCOLA OTTONE FILETTATA

Cod.-Code	Descrizione	D	d	P	d1	Gr.
29010000	D.20 04MA	20	04MA	8	8	7
29010050	D.20 05MA	20	05MA	10	8	8
29010100	D.20 06MA	20	06MA	12	8	8
29010200	D.26 06MA	26	06MA	12	12	15
29010250	D.26 08MA	26	08MA	16	12	17
29010350	D.30 06MA	30	06MA	12	16	21
29010400	D.30 08MA	30	08MA	16	16	23
29010450	D.30 10MA	30	10MA	22	16	25
29010550	D.35 08MA	35	08MA	16	16	35
29010600	D.35 10MA	35	10MA	22	16	37
29010650	D.35 12MA	35	12MA	22	16	41
29010750	D.40 08MA	40	08MA	16	16	52
29010800	D.40 10MA	40	10MA	22	16	53
29010850	D.40 12MA	40	12MA	22	16	60
29010900	D.45 08MA	45	08MA	16	22	67
29010950	D.45 10MA	45	10MA	22	22	70
29011000	D.45 12MA	45	12MA	22	22	78
29011050	D.45 14MA	45	14MA	22	22	78
29011100	D.45 16MA	45	16MA	22	22	85
29011150	D.50 10MA	50	10MA	22	22	98
29011200	D.50 12MA	50	12MA	22	22	104
29011250	D.50 14MA	50	14MA	22	22	104
29011300	D.50 16MA	50	16MA	22	22	114

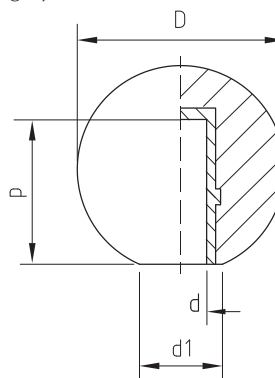


**POMOLO A SFERA
CON BOCCOLA NYLON**

Duroplasto di colore nero, finitura lucida, resistente a solventi, oli, grassi ed altri agenti chimici.
Boccola in nylon per montaggio a pressione.

BALL KNOB, WITH NYLON BUSH

Phenoplast, black colour, glossy finish, solvents-oils-greases and other chemical agents-proof. Press-fitting nylon bush.



POMOLO A SFERA CON BOCCOLA NYLON

Cod.-Code	Descrizione	D	d	P	d1	Gr.
29020050	D.20 foro 05	20	5	14	8	6
29020100	D.20 foro 06	20	6	14	8	6
29020150	D.26 foro 05	26	5	14	12	13
29020200	D.26 foro 06	26	6	14	12	12
29020350	D.30 foro 06	30	6	14	16	18
29020400	D.30 foro 08	30	8	22	16	17
29020450	D.30 foro 10	30	10	22	16	16
29020500	D.35 foro 06	35	6	14	16	30
29020550	D.35 foro 08	35	8	22	16	28
29020600	D.35 foro 10	35	10	22	16	27
29020650	D.35 foro 12	35	12	24	16	27
29020750	D.40 foro 08	40	8	22	16	46
29020800	D.40 foro 10	40	10	22	16	45
29020850	D.40 foro 12	40	12	24	16	44
29020950	D.45 foro 10	45	10	22	22	60
29021000	D.45 foro 12	45	12	24	22	59
29021150	D.50 foro 10	50	10	22	22	85
29021200	D.50 foro 12	50	12	24	22	83
29021250	D.50 foro 14	50	14	24	22	82
29021300	D.50 foro 16	50	16	29	22	81