



● MANIGLIA A PERA CON FORO CIECO FILETTATO

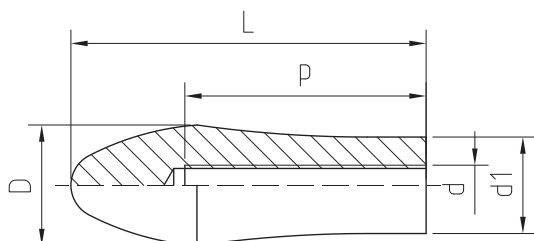
Duroplasto di colore nero, resistente a solventi, oli, grassi ed altri agenti chimici.

Foro cieco filettato.

● HANDLE, PEAR-SHAPED WITH MOULDED THREAD

Phenoplast, black colour, solvents-oils-greases and other chemical agents-proof.

Moulded thread.



● MANIGLIA A PERA CON PERNO FERRO

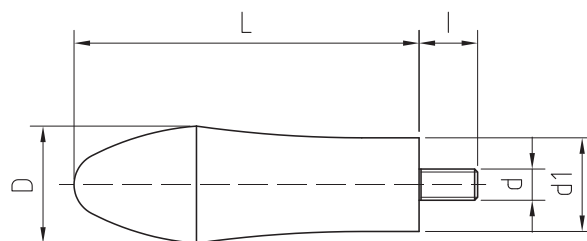
Duroplasto di colore nero, resistente a solventi, oli, grassi ed altri agenti chimici.

Perno in AVP zincato filettato con estremità terminale smussata.

● HANDLE, PEAR-SHAPED WITH THREADED STEEL BOLT

Phenoplast, black colour, solvents-oils-greases and other chemical agents-proof.

Zinc-plated steel bolt, threaded, chamfered end.



MANIGLIA A PERA CON FORO CIECO FILETTATO

Cod.Code	Descriz.	L	d	d1	D	P	Gr.
26000000	L88 10MA	88	10MA	24	30	60	51
26000050	L88 12MA	88	12MA	24	30	60	50

MANIGLIA A PERA CON PERNO FERRO

Cod.Code	Descriz.	L	d	d1	D	l	Gr.
26020000	L88 M08x15	88	08MA	24	30	15	81
26020050	L88 M08x30	88	08MA	24	30	30	81
26020150	L88 M10x15	88	10MA	24	30	15	73
26020200	L88 M10x25	88	10MA	24	30	25	100
26020250	L88 M10x30	88	10MA	24	30	30	96
26020350	L88 M12x20	88	12MA	24	30	17	96
26020400	L88 M12x25	88	12MA	24	30	25	102